

# FUTURE LAND USE MAP

## Ypsilanti Township, Washtenaw County

### NEIGHBORHOOD PRESERVATION:

Neighborhood Preservation areas are established residential neighborhoods primarily north of Ford Lake and I-94. The intent is to preserve and strengthen the neighborhoods through investment, rehabilitation and infill.

### INNOVATION & EMPLOYMENT DISTRICT:

The Innovation and Employment District is intended to be the major employment area of the township. The area is targeted for companies at the cutting edge of innovation with a combination of technology, office, craft manufacturing or light industrial uses.

### OPEN SPACE, NEIGHBORHOOD PRESERVATION, & CLUSTER DEVELOPMENT:

Open Space, Neighborhood Preservation, and Cluster Neighborhood areas are in the southern part of the township. These areas can accommodate smaller scale specialized agricultural uses and low density/cluster single-family residential while preserving open spaces, natural features and existing neighborhoods.

### AGRICULTURAL PRESERVATION:

Agriculture Preservation is clustered in the south-central portion of the township, where farming operations are active. The category conserves agricultural lands for small, medium and larger farms, and provides stability for the agricultural economy while creating a sense of place.

### NEIGHBORHOOD TRANSITION DISTRICTS:

Neighborhood transition districts are multiple family housing, commercial and office uses, but can include single-family homes and institutional/civic uses and spaces. Uses shall be compatible with the existing areas and respect adjacent neighborhoods. The district is intended to serve as a sensible transition from Neighborhood Preservation Areas to more intense uses.

### TOWNSHIP CORE:

The Township Core is intended to be the central core of the township. It includes the governmental center of the township with the Civic Center, County Courthouse, and the district library. Huron Street and the immediately surrounding area is meant to host a mix of uses from multiple-family residential to commercial to light industrial.

### MIXED USE CORRIDORS:

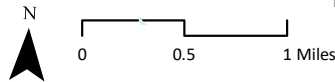
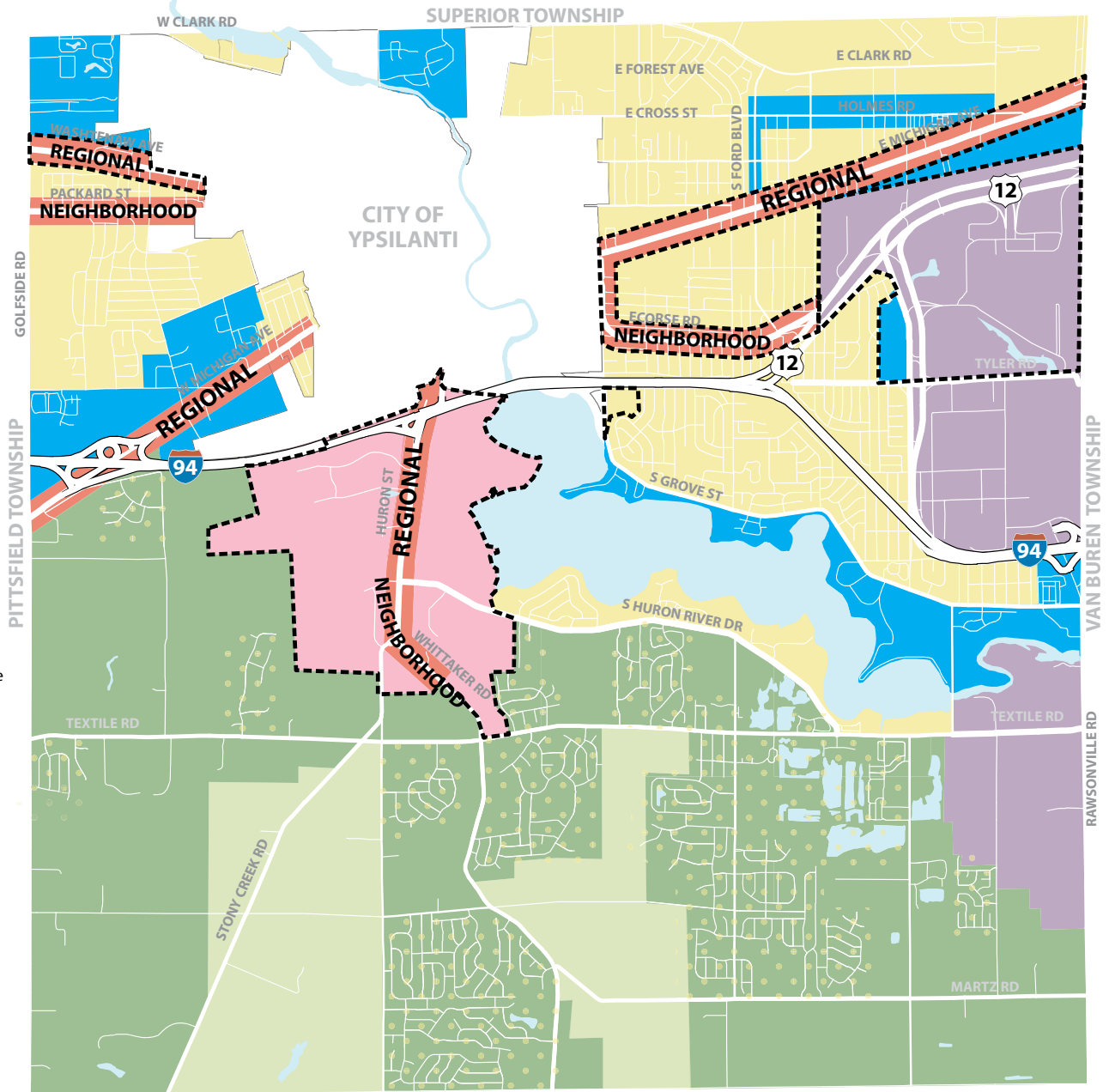
Mixed Use Corridors are developed transportation arteries, with a mixture of residential, commercial, office and employment uses. The intent is to improve the function, investment value and aesthetics of corridor. There are two types of Mixed Use Corridors: Neighborhood and Regional.

### SPECIAL AREA PLANS:

These areas have special area plans either in this document or recently adopted by Ypsilanti Township.

### EXISTING NEIGHBORHOODS:

The intent is to preserve and strengthen these neighborhoods through investment, maintenance and preservation of surrounding open space.



Source: SEMCOG, MiGDL, Ypsilanti Township  
Carlsle/Wortman Associates  
March 2020

