

***Recreation Plan***

***Ford Lake Dam  
FERC Project No. 5334***

***Charter Township of Ypsilanti***

***April 5, 2005***



## **Preface**

This Recreation Plan was prepared in compliance with Article 412 of the Federal Energy Regulatory Commission (FERC) Final Order on Offer of Settlement and Issuing New License for the Ford Lake Dam Hydroelectric project, October 9, 2003. A copy of Article 412 is included in the appendix.

## **1. Background Information**

The Ford Lake Dam Hydroelectric project encompasses the 1,050 acre Ford Lake impoundment; a thin strip of buffer land surrounding the impoundment (from the water surface at elevation 684.6 up to elevation 686.0); and the Charter Township of Ypsilanti's Ford Lake Park, located on the southern shore of the impoundment. Ford Lake Park contains roughly 93 acres of woodland and lawn. The project boundary is shown on the attached figures Exhibit G-1, G-2, and G-3. Ford Lake Park is labeled as its former name, JYRO Park. Park improvements include picnic tables and shelters, parking lots, basketball courts, soccer fields, trails, tennis courts, volleyball, a boat launch, restrooms, and American Disability Act (ADA) access to the water.

The Township has adopted a township-wide Parks and Recreation Mater Plan that covers the uses, capital improvement plans, maintenance, and funding sources for all the Township's Parks, including Ford Lake Park. The 1997 Mater Plan was cited during the initial license application, and the current version (February, 2202) is available at <http://twp.ypsilanti.mi.us/recreate/PRMasterPlan.pdf>.

There is currently no ADA access to the Huron River downstream of the dam through the project lands. The Charter Township of Ypsilanti plans to provide ADA access to the Huron River downstream of the dam via the Township's North Hyrdo Park, located adjacent to the project lands immediately downstream of the dam. North Hydro Park is not part of the project lands. The remainder of this plan describes development plans for North Hydro Park as they pertain to the FERC License.

## **2. Fishing Access, Pathways, and Picnic Tables in Tailrace Area**

The preliminary site plan for the North Hydro Park is shown in attached figures Sheet C1 - C4. Improvements to the North Hydro Park are still in the preliminary design phase and are subject to review by the Township Park Board, Michigan Department of Environmental Quality (MDEQ) Permitting, and Michigan Department of Natural Resources (MDNR) Recreation Division.

The preliminary plan calls for a 60-car gravel parking lot with curb, and 3 spaces paved with direct walk access per Michigan barrier-free standards. All walkways will be 10-ft wide asphalt paths and will be ADA-accessible.

The fishing pier and canoe launch are proposed to be a floatable, plastic dock system by EZ-dock. The dock system will be 80 inches wide by 20 feet long, with a metal railing to accommodate handicap accessibility. There will be a 5-ft wide aluminum gangway with a railing extending from the promenade on the bank out to the EZ-docks. Access from the parking area to the docks will be provided by both a 10-ft wide stairway and an 8-ft wide handicap access ramp, and an 8-ft wide promenade, all with rails. The stairway, ramp and promenade will be constructed of treated wood posts and structural materials, with the decking being a composite/plastic material. The top and bottom rails will be made out of plastic lumber with vinyl coated wire mesh installed between the posts.

The restrooms will be an ADA-accessible, prefabricated building by Romtec, Inc., model “Sierra III.”. More information on the floor plan is available at [www.romtec.com](http://www.romtec.com).

The picnic shelter will be a prefabricated 28-ft. octagon structure with a shingled roof sited on a 1,630-sf concrete pad which is ADA-accessible. 6 picnic tables are planned for the shelter, of which two are specifically designed for wheel chair access. Another 8 tables with access are planned throughout the park and will be sited on concrete pads.

The preliminary plans also call for 8 park benches along the path facing the river.

### **3. Control of Soil Erosion and Sedimentation**

Potential erosion control and sedimentation control measures include:

1. All erosion control features must be installed prior to beginning site grading operations.
2. Silt fence must be installed to prevent sediment from leaving the disturbed area.
3. Silt fence or other inlet protection devices must be installed around all catch basin inlets and sewer inlets.
4. Rock construction entrances must be installed at all construction access points to the site.
5. All erosion control features must be maintained throughout the duration of construction, including the removal of accumulated silt in front of silt fence, until vegetation has been established and all site paving has been completed.
6. Soils and sediment tracked onto existing streets and paved areas must be removed on a daily basis, or as directed by Owner.
7. Seed and mulch disturbed areas with stabilizing vegetation within 14 days of the completion of grading activities.
8. All work must be performed in accordance with the NPDES construction permit.

Final control measures will be listed on the final improvement plans or in the project specifications. Final control measures will be consistent with local and state requirements.

### **4. Management of the Facilities**

It is the responsibility of the Township to manage this recreational site for the life of the license.

### **5. Needs of the Disabled**

The preliminary site plan complies with the American Disability Act (ADA).

## **Appendix A – FERC Final Order, Article 412. Recreation Plan.**

Article 412. *Recreation Plan.* Within one year of the issuance date of this license, the licensee shall file with the Commission, for approval, a recreation plan. The plan, at a minimum, shall include the following:

- (1) Description of measures, including final design drawings and a construction schedule, to: (a) develop formal fishing access downstream of the dam, (b) provide pathway(s) to the fishing access area and the tailrace, and (c) install picnic tables in the tailrace area;
- (2) Measures to control soil erosion and sedimentation during the construction and operation of the facilities;
- (3) Measures to manage the recreational facilities over the term of the license; and
- (4) A discussion of how the needs of the disabled were considered in the planning and design of each recreational enhancement.

The licensee shall prepare the recreation plan after consultation with the Michigan Department of Natural Resources (MDNR) to ensure that the facilities provided best meet recreation needs and are coordinated with other initiatives in the region. The licensee shall include with the plan documentation of consultation, copies of comments and recommendations on the completed plan after it has been prepared and provided to MDNR, and specific descriptions of how MDNR's comments are accommodated by the plan. The licensee shall allow a minimum of 30 days for the MDNR to comment and make recommendations prior to filing the plan with the Commission for approval. If the licensee does not adopt a recommendation, the filing shall include the licensee's reasons, based on project-specific information.

The Commission reserves the right to require changes to the plan. No ground-disturbing or land-clearing activities associated with recreation facility construction shall begin until the licensee is notified by the Commission that the recreation plan is approved. Upon approval, the licensee shall implement the plan, including any changes required by the Commission.

## **Appendix B – Correspondence with MDEQ and MDNR during Preparation of Plan**

Chris Freiburger, MDNR Fisheries Division, May 6, 2004;

Summary of meeting with David Hibbs, Barr Engineering at USFWS offices in East Lansing:

- The Township has received a grant from the MDNR to develop the North Hydro Park and intends to hire a consultant to design the park, but it is unlikely that site plans for the park can be prepared by September 2004 (the FERC 1-year deadline). Chris is OK asking FERC for a time extension, rather than submitting a plan that is incomplete/incorrect. In the extension request I should outline the schedule for completion of the park plan.
- Item (1) - The consultant's park plan (schematic or site plan showing path widths, locations, slopes, surface lot material, fishing pier location, etc.) will become the Recreation Plan. Chris will take the Recreation Plan to the recreation division of MDNR for approval, even though the recreation division will likely already be very aware of the site plan since they are funding it.
- Item (2) - soil erosion methods should be called out either on the site plans or in the specifications.
- Item (3) - Chris wants to see that the Township (and not some other agency) is responsible for managing/maintaining the park; this item usually consists of one sentence: "It is the responsibility of the Township to manage this site for the life of the license."
- Item (4) - Does the plan comply with the ADA? If yes, say so. If no, list the considerations/reasons.

## David Hibbs

---

**From:** Chris Freiburger [freiburg@michigan.gov]  
**Sent:** Tuesday, March 22, 2005 2:21 PM  
**To:** David Hibbs  
**Cc:** Gary Towns  
**Subject:** Re: Ford Lake Dam - Recreation Plan

Dave:

I reviewed the Recreation Plan for the Ford Lake Hydroelectric Project and it looks pretty good. It appears that everything under Article 412 required in the FERC license is covered. Sheet C1-C4 shows in more detail the recreational attributes that are planned to be developed on site, specifically the picnic shelter, accessibility ramp, fishing pier, stair access, parking lot and canoe ramp.

I would like to request that in the narrative of the Recreation Plan that you outline the recreational amenities and provide some detail on the construction or material used. For example state in the narrative that a gravel parking lot will be developed to hold 60 vehicles, ? (#) will be ADA accessible, the canoe ramp will be constructed of material (?) and will be accessible, the fishing pier will be made of wood, will have a dimension of (?) ft by (?) ft and will be accessible with a railing.

If you would place this information in the narrative of the plan I think it is ready to go. If you have any questions please give me a call.

Lastly, Dave could you send me a hard copy of the Recreation Plan for some reason I'm unable to print out the entire report. Thanks

Chris Freiburger  
FERC Program, Supervisor  
Fisheries Division  
Michigan Department of Natural Resources 517/373-6644; phone 517/373-0381; fax freiburg@michigan.gov

>>> "David Hibbs" <dhibbs@barr.com> 03/21/2005 10:51 AM >>>  
Chris -

A \*.pdf file of the Recreation Plan is attached.

Dave

David Hibbs, PE, PhD  
Barr Engineering Company  
450 South Wagner Road  
Ann Arbor, MI 48103

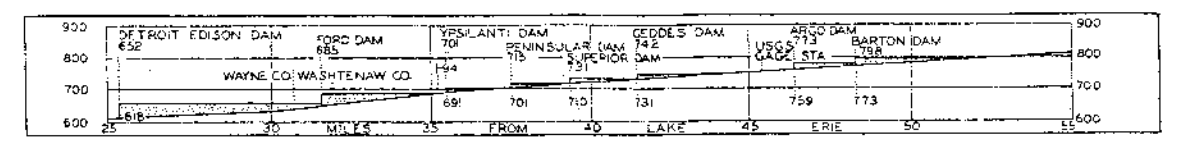
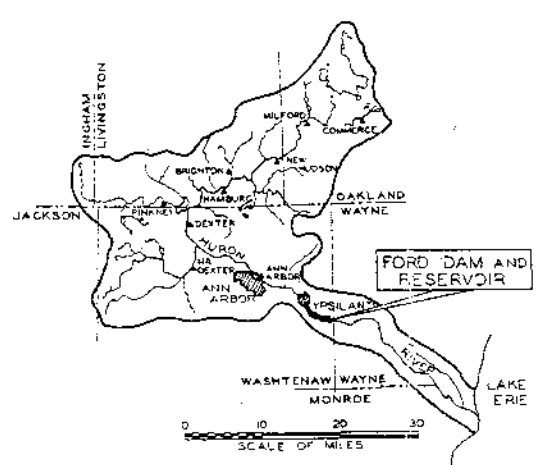
(734) 327-1200 ext. 1207  
(734) 327-1212 FAX  
e-mail: dhibbs@barr.com  
<http://www.barr.com>

<<Recreation\_3\_21\_05.pdf>>

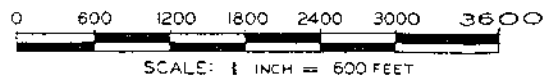
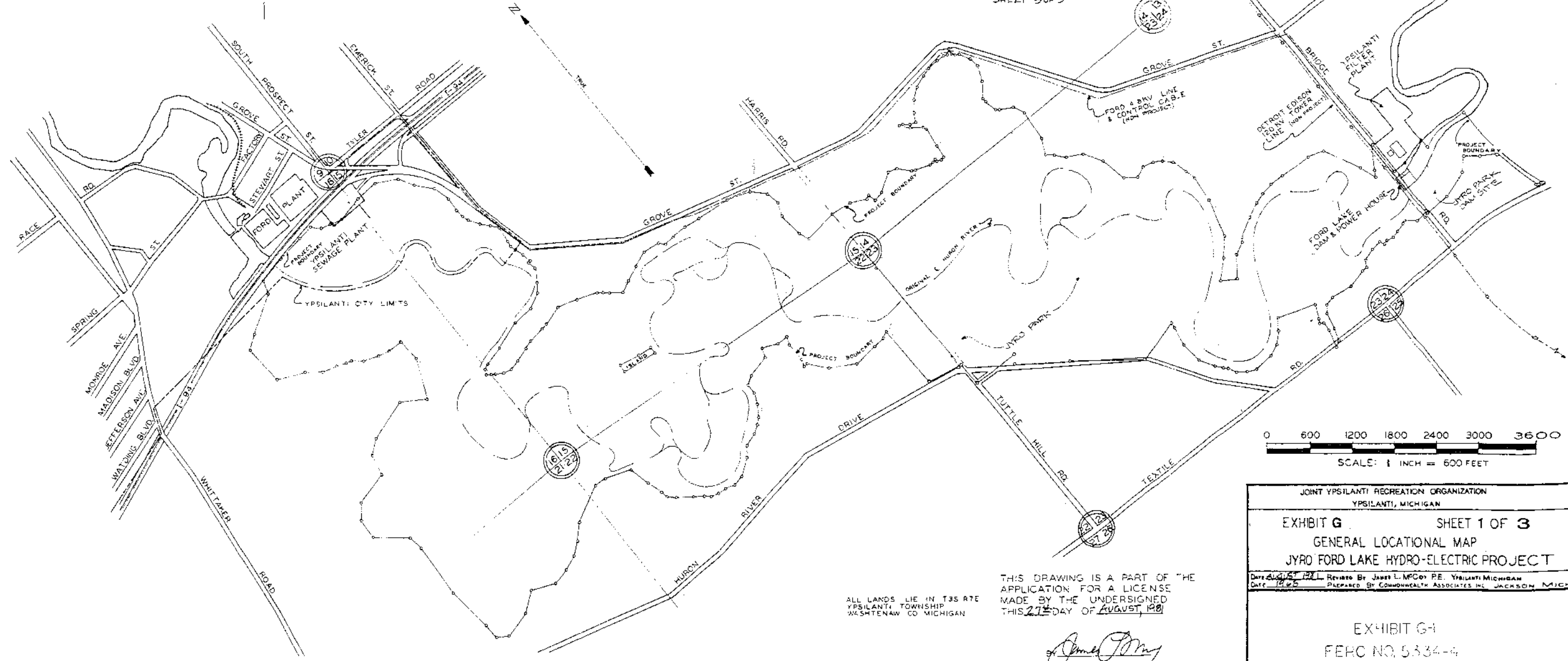
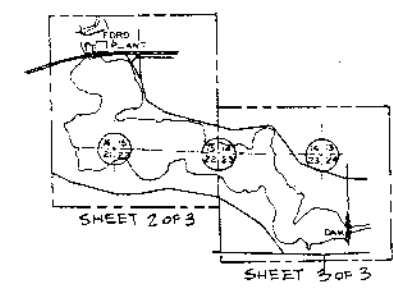
**Appendix C – Agencies’ comments and description of how the agencies’ comments are accommodated by the plan.**

<b>Reference</b>	<b>Agency’s comment</b>	<b>Description of how the agency’s comment is accommodated by plan</b>
March 22, 2005 e-mail from Chris Freiburger to David Hibbs	“I would like to request that in the narrative of the Recreation Plan that you outline the recreational amenities and provide some detail on the construction or material used.”	A description of the proposed amenities their construction materials was added to Section 2. Fishing Access, Pathways, and Picnic Tables in Tailrace Area.





HURON RIVER BASIN PROFILE



ALL LANDS LIE IN T35 R7E  
YPSILANTI TOWNSHIP  
WASHTENAW CO MICHIGAN

THIS DRAWING IS A PART OF THE  
APPLICATION FOR A LICENSE  
MADE BY THE UNDERSIGNED  
THIS 27<sup>TH</sup> DAY OF AUGUST, 1980

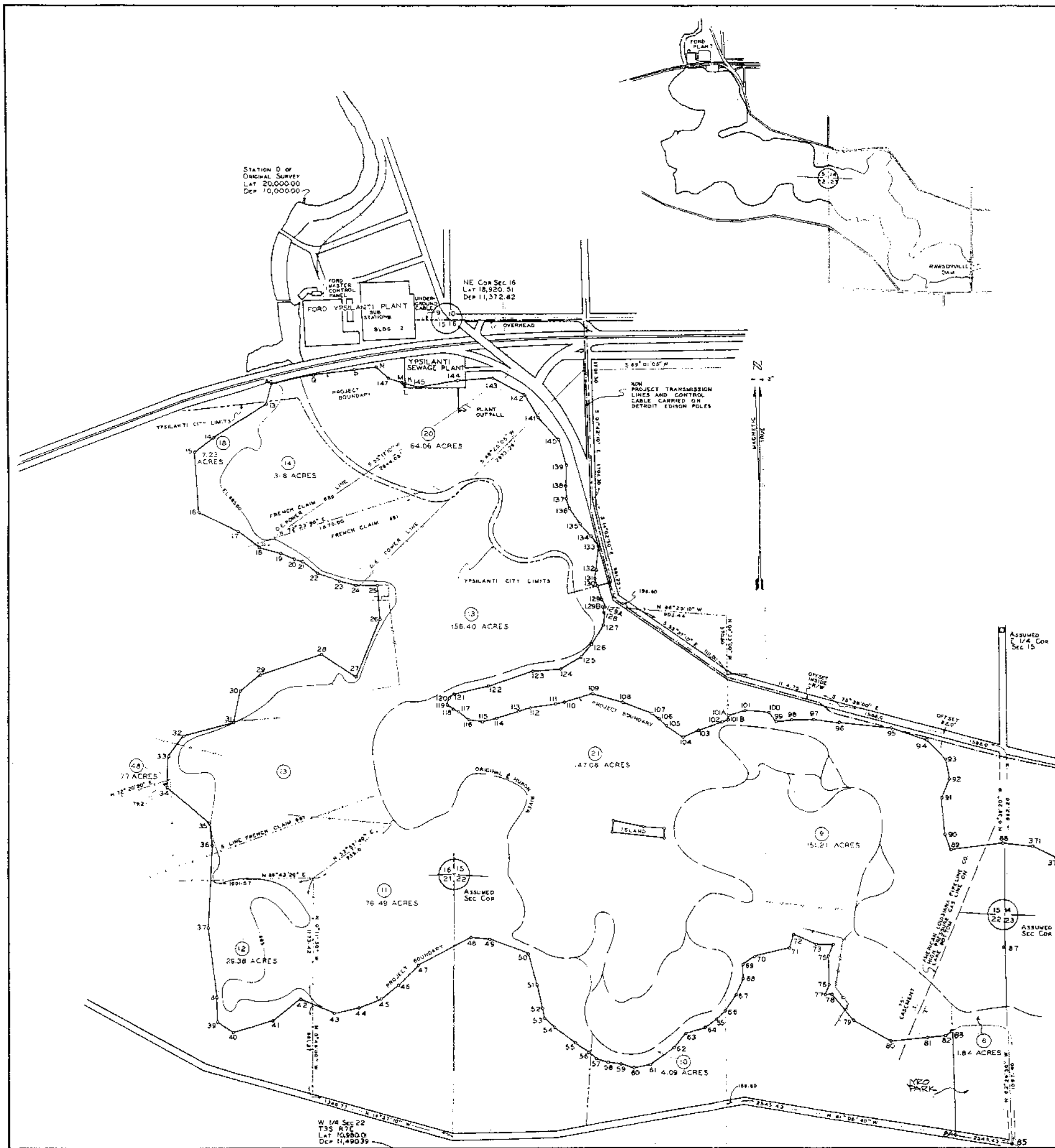
*James L. McCoy*

JOINT YPSILANTI RECREATION ORGANIZATION  
 YPSILANTI, MICHIGAN

EXHIBIT G SHEET 1 OF 3  
 GENERAL LOCATIONAL MAP  
 JYRO FORD LAKE HYDRO-ELECTRIC PROJECT

DATE 8-15-80 REVISED BY JAMES L. MCCOY, JR. YPSILANTI, MICHIGAN  
 PREPARED BY COMMONWEALTH ASSOCIATES, INC. JACKSON, MICHIGAN

EXHIBIT G-1  
 FEHC NO. 5334-4

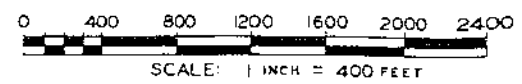


PROJECT BOUNDARY											
STATION	DISTANCE	BEARING	STATION	DISTANCE	BEARING	STATION	DISTANCE	BEARING	STATION	DISTANCE	BEARING
A	192.98	S11°29'20"W	63	197.71	N12°02'20"E	85	335.60	S00°54'20"E			
13	608.32	S58°48'00"W	64	133.36	N52°55'20"E	225	800.01	S89°35'10"E			
14	227.00	S53°56'00"W	65	102.18	N46°31'20"E	226	217.16	S 24°08'00"E			
15	578.00	S04°41'00"E	66	182.70	N34°34'40"E	227	609.00 (S)	S 57°32'00"E			
16	423.55	S65°50'00"E	67	171.29	N32°43'40"E	228	947.06	S 53°32'45"E			
17	754.74	S51°24'20"E	68	137.20	N03°02'40"W	229	67.64	S 51°07'15"E			
18	220.11	S74°16'20"E	69	132.00	N35°38'20"E	230	628.85	N 70°40'45"E			
19	145.63	S68°09'00"E	70	334.20	N76°20'00"E	231	73.01	S05°25'40"W			
20	37.90	S72°11'20"E	71	130.34	N18°01'20"E	232	283.52	S07°40'20"W			
21	180.05	S52°56'00"E	72	239.98	S68°50'00"E	233	316.15	S07°55'40"E			
22	228.75	S70°43'40"E	73	158.53	S08°50'20"E	234	261.38	S33°52'00"E			
23	163.57	S75°09'40"E	74	120.59	S21°26'40"W	235	107.36	S37°34'20"E			
24	211.28	N89°29'20"E	75	259.96	S01°45'20"E	236	64.38	S45°53'20"E			
25	114.67	S04°54'00"E	76	106.85	S15°38'40"E	237	122.56	S 25°51'40"E			
26	596.97	S28°14'10"W	77	55.23	N80°15'40"E	238	150.19	S56°13'50"E			
27	389.80	N57°45'40"W	78	328.25	S40°13'00"E	239	142.57	S 62°03'50"E			
28	422.19	S71°44'00"W	79	350.28	N50°59'00"E	240	289.15	N84°28'00"E			
29	142.56	S51°05'20"N	80	340.44	N64°23'00"E	241	179.50	N64°13'40"E			
30	148.07	S12°02'00"W	81	173.44	N85°15'20"E	242	181.30	N45°29'20"E			
31	492.24	S75°12'20"W	82	111.65	N56°29'20"E	243	189.70	N34°50'20"E			
32	145.46	S37°00'40"W	83	978.56	S02°29'30"E	244	557.90	S71°33'20"E			
33	284.83	S02°56'20"W	84	518.3	S81°04'40"E	245	207.52	S23°36'30"W			
34	535.45	S51°02'40"E				246	69.37	S22°50'30"W			
35	211.97	S07°53'00"E				247	40.80	S58°33'40"E			
36	178.07	S02°06'20"W				248	129.23	S04°00'50"W			
37	451.83	S08°39'00"E				249	277.21	S14°26'50"W			
38	226.09	S01°35'00"E				250	94.96	N56°17'20"E			
39	182.10	S55°50'00"E				251	200.42	N18°35'20"E			
40	403.67	N74°26'40"E				252	236.12	N09°10'00"E			
41	117.69	N52°41'00"E				253	115.51	N40°32'00"E			
42	355.54	S67°28'40"E				254	139.12	N75°12'00"E			
43	238.00	N72°30'40"E				255	305.66	S64°11'20"E			
44	231.42	N69°41'40"E				256	271.24	N75°19'20"E			
45	321.69	N51°40'40"E				257	72.32	N80°11'50"E			
46	264.13	N43°12'20"E				258	102.98	N31°17'00"E			
47	162.34	N62°32'20"E				259	179.60	N70°49'00"E			
48	174.66	S85°25'20"E				260	147.29	N82°32'00"E			
49	394.62	S69°56'40"E				261	71.32	S33°46'00"E			
50	298.30	S16°17'40"E				262	56.49	N67°15'00"E			
51	227.44	S13°52'40"E				263	106.88	S78°48'00"E			
52	99.88	S14°32'40"E				264	102.00	N80°39'00"E			
53	129.15	S45°47'40"E				265	130.54	N74°37'00"E			
54	243.72	S55°07'20"E				266	49.26	N45°36'00"E			
55	154.12	S56°57'10"E				267	166.42	S50°11'20"E			
56	98.97	S48°52'10"E				268	135.62	N78°51'00"E			
57	113.44	S70°01'30"E				269	66.70	S01°12'30"E			
58	124.79	S83°36'30"E				270	587.50	N85°20'20"E			
59	135.81	S76°49'30"E				271	311.55	N45°00'20"E			
60	158.10	N79°28'30"E				272	150.48	S 51°24'00"E			
61	275.06	N54°40'10"E				273	112.84	N54°00'20"E			
62	173.00	N38°02'40"E				274	320.01	S01°40'00"E			
						275	56.01	N45°16'20"E			

ALL COURSES REFER TO MERIDIANS AS ESTABLISHED BY OBSERVATIONS TAKEN ON POLARIS.

RESERVOIR BOUNDARY TRAVERSE FOLLOWS 696.00 CONTOUR ORIGINAL USGS DATUM

ALL ELEVATIONS IN THIS APPLICATION REFER TO ORIGINAL USGS DATUM CONVERSION: 696.00 ORIGINAL USGS DATUM = 695.632 CORRECTED USGS DATUM



THIS DRAWING IS A PART OF THE APPLICATION FOR A LICENSE MADE BY THE UNDERSIGNED THIS 27th DAY OF AUGUST 1961

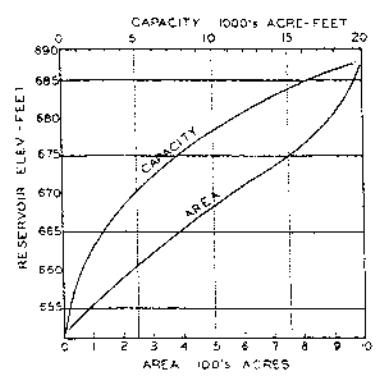
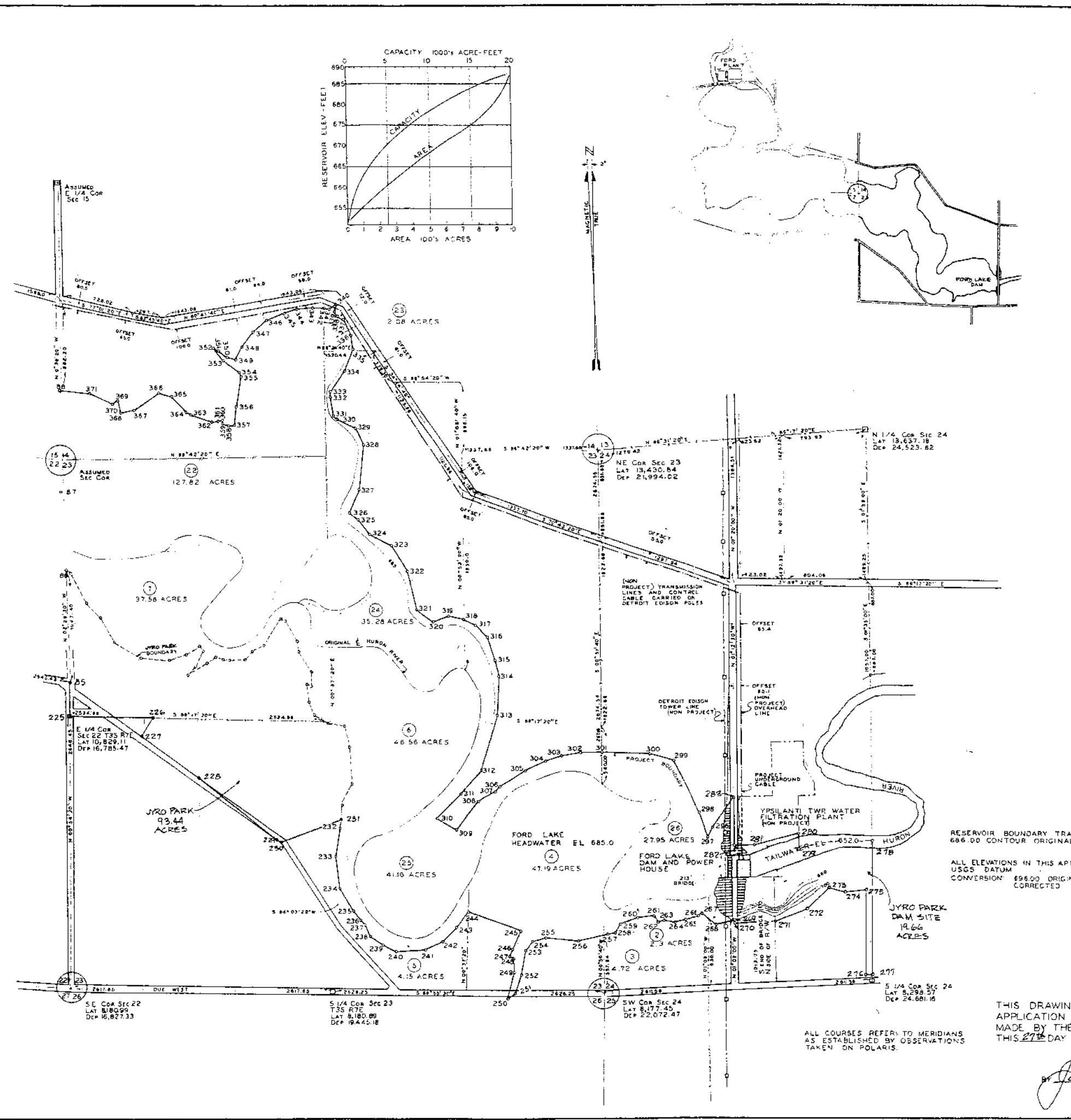
BY *James L. McCoy*

JOINT YPSILANTI RECREATION ORGANIZATION  
 YPSILANTI, MICHIGAN

**EXHIBIT G** SHEET 2 OF 3  
 PROJECT AREA DETAIL MAP 1 OF 2  
 JYRO FORD LAKE HYDRO-ELECTRIC PROJECT

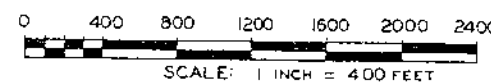
DATE AUGUST 1961 REVISED BY JAMES L. MCCOY P.E. YPSILANTI, MICHIGAN  
 DATE 1965 PREPARED BY COMMONWEALTH ASSOCIATES, INC. JACKSON, MICH.

EXHIBIT G-2  
 FERC NO. 5334-5



PROJECT BOUNDARY				PROJECT BOUNDARY				PROJECT BOUNDARY			
STATION	DISTANCE	BEARING	STATION	DISTANCE	BEARING	STATION	DISTANCE	BEARING	STATION	DISTANCE	BEARING
277			340			105					
278	1278.28	N01°40'40"W	341	71.41	S57°16'00"W	106	90.74	N48°27'12"W			
279	6.10	WESTERLY	342	59.43	N79°13'20"W	107	83.15	N48°02'12"W			
280	163.08	N01°12'30"W	343	314.36	N86°41'20"W	108	317.48	N70°43'30"W			
281	418.80	S74°12'50"W	344	157.00	S84°18'40"W	109	293.67	N72°33'46"W			
282	194.68	S88°47'30"W	345	138.37	S72°11'00"W	110	283.28	S73°07'24"W			
283	463.94	N01°12'30"W	346	165.52	S66°03'40"W	111	84.63	S80°08'02"W			
284	300.48	S33°09'50"W	347	173.31	S51°08'10"W	112	242.88	S80°22'13"W			
285	98.59	S29°02'10"W	348	186.30	S37°21'30"W	113	117.31	S71°12'24"W			
286	255.36	N20°45'10"W	349	136.20	S26°42'30"W	114	215.35	S70°48'13"W			
287	574.86	N26°17'20"W	350	86.73	N81°28'10"W	115	142.75	S75°18'34"W			
288	230.54	N74°47'50"W	351	319.08	N51°34'00"W	116	127.45	N82°05'58"W			
289	451.80	N88°48'10"W	352	14.49	N72°26'00"W	117	120.89	N60°01'05"W			
290	195.47	S89°25'20"W	353	153.58	S42°32'00"E	118	50.25	N58°01'38"W			
291	176.81	S79°58'00"W	354	187.90	S52°09'50"E	119	85.99	N34°24'32"W			
292	161.85	S72°51'00"W	355	47.85	S23°47'20"E	120	80.22	N14°54'09"E			
293	234.70	S65°15'30"W	356	293.52	S09°20'30"W	121	67.07	N47°34'49"E			
294	302.77	S59°41'30"W	357	279.84	S05°04'20"W	122	329.10	N80°24'54"E			
295	57.38	S37°17'40"W	358	54.40	S84°45'40"W	123	447.10	N70°13'13"E			
296	186.94	S60°38'30"W	359	66.97	N67°54'20"W	124	274.69	N85°41'42"E			
297	351.15	S37°23'10"W	360	30.64	N03°39'20"W	125	230.14	N58°25'14"E			
298	218.24	N60°50'10"W	361	42.15	S71°12'40"W	126	146.73	N38°38'24"E			
299	334.66	N43°59'50"E	362	62.60	S64°15'48"W	127	202.01	N31°02'18"E			
300	206.85	N40°24'30"E	363	220.78	N72°04'20"W	128	98.42	N01°22'27"W			
301	558.80	N15°58'30"E	364	59.15	N66°38'10"W	129	55.41	N11°19'04"W			
302	376.71	N02°11'50"E	365	207.69	N43°59'20"W	130	15.00	S86°25'10"E			
303	162.58	N14°05'50"W	366	140.08	N74°46'20"W	131	89.09	N27°49'10"W			
304	336.63	N17°52'50"W	367	300.89	S56°28'40"W	132	133.73	N18°28'30"W			
305	169.56	N48°00'10"W	368	138.68	S76°22'30"W	133	79.61	N21°08'30"W			
306	131.06	N62°36'10"W	369	109.48	N27°21'00"W	134	81.13	N08°02'30"E			
307	175.72	N78°34'10"W	370	48.62	S69°48'00"W	135	228.81	N06°52'10"E			
308	164.96	S67°36'00"W	371	254.98	N65°52'50"W	136	123.57	N39°06'50"W			
309	118.40	N54°35'40"W	372	274.17	N84°51'30"W	137	156.15	N41°51'54"W			
310	394.25	N13°50'00"W	373	488.00	S81°25'00"W	138	175.36	N35°21'30"W			
311	257.09	N30°32'10"W	374	165.02	N22°48'20"W	139	202.89	N18°09'30"W			
312	215.02	N62°45'00"W	375	339.41	N06°50'00"W	140	116.95	N06°07'50"W			
313	155.65	N41°40'00"W	376	180.67	N20°56'40"E	141	193.66	N03°43'30"E			
314	104.84	N53°10'00"W	377	191.48	N08°13'40"W	142	250.85	N16°13'30"W			
315	246.73	N23°21'00"E	378	259.22	N46°04'20"W	143	292.27	N41°35'50"W			
316	438.40	N05°16'20"E	379	339.09	N78°44'40"W	144	242.52	N30°08'30"W			
317	171.03	N24°49'40"W	380	487.14	N84°52'40"W	145	338.95	N62°57'10"W			
318	210.69	N63°12'40"W	381	245.15	N83°25'50"W	146	339.30	S85°02'20"W			
319	47.37	N53°15'40"W	382	213.64	S87°09'10"W	147	392.03	S79°47'20"W			
320	185.95	N09°51'00"W	383	150.89	S86°07'50"W	148	130.00	N72°12'40"W			
321	47.09	R08°04'40"E	384	109.02	N42°20'10"W	149	46.00	S01°01'50"E			
322	242.75	N38°44'20"E	385	228.17	N84°40'50"W	150	50.00	N34°42'50"W			
323	330.33	N21°34'20"E	386	143.50	S69°01'30"W	151	130.00	N72°52'40"W			
324	133.93	N08°37'40"W	387	25.00	S01°13'10"E	152	155.00	N48°28'40"W			
325	170.28	N26°12'20"W	388	55.58	S68°05'15"W	153	234.00	S83°45'50"W			
326	75.49	S58°02'40"W	389	238.16	S67°34'28"W	154	400.30	S81°52'10"W			
327	47.35	N35°39'40"W	390	169.56	S64°13'20"W	155	392.43	S77°38'10"W			
328	67.96	N13°42'20"E	391	200.99	S52°55'01"W						

RESERVOIR BOUNDARY TRAVERSE FOLLOWS  
686.00 CONTOUR ORIGINAL USGS DATUM  
ALL ELEVATIONS IN THIS APPLICATION REFER TO ORIGINAL  
USGS DATUM  
CONVERSION: 686.00 ORIGINAL USGS DATUM = 685.632  
CORRECTED USGS DATUM



THIS DRAWING IS A PART OF THE  
APPLICATION FOR A LICENSE  
MADE BY THE UNDERSIGNED  
THIS 27th DAY OF AUGUST 1961

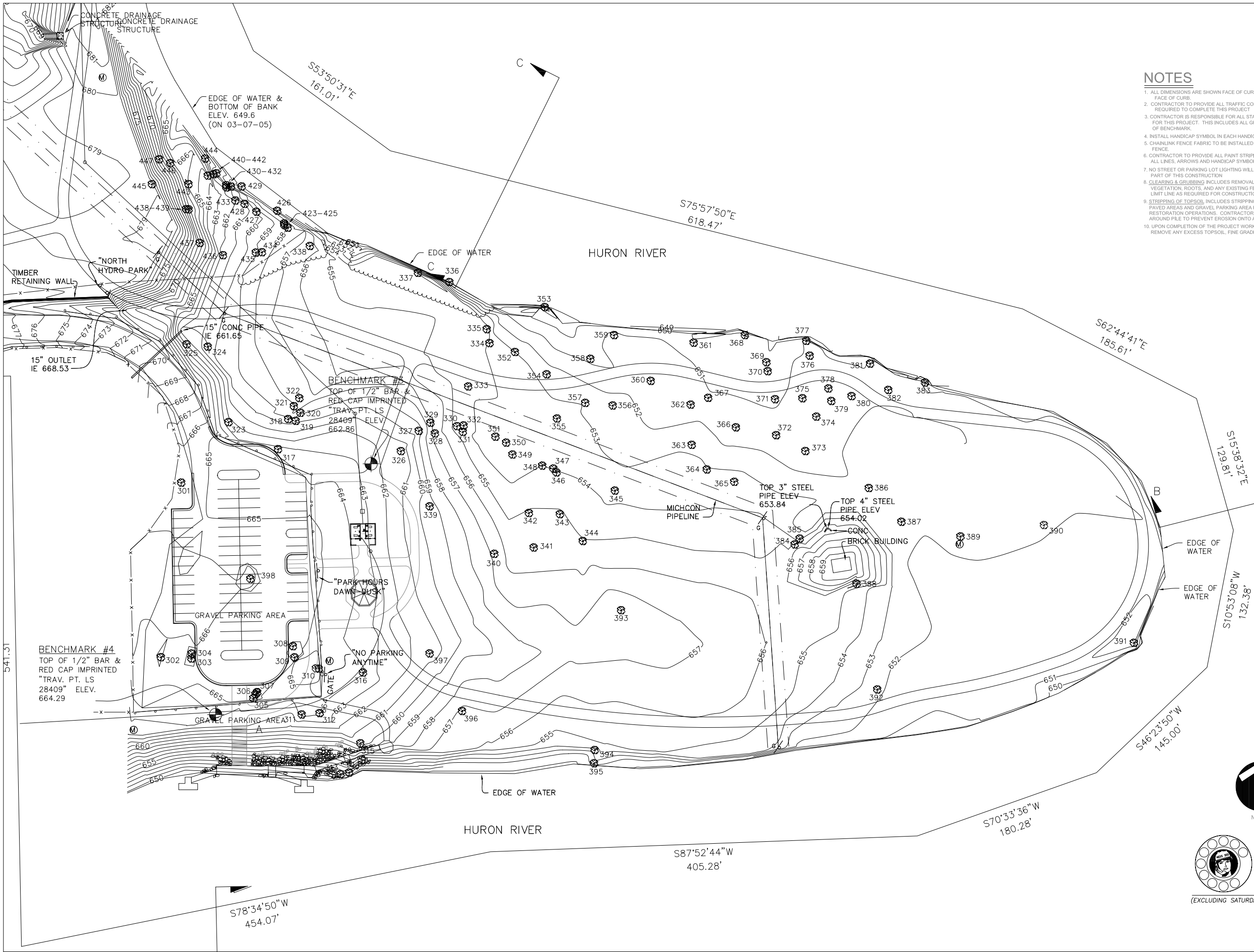
*James J. [Signature]*

JOINT YPSILANTI RECREATION ORGANIZATION  
YPSILANTI, MICHIGAN

EXHIBIT G SHEET 3 OF 3  
PROJECT AREA DETAIL MAP 2 OF 2  
JYRO FORD LAKE HYDRO-ELECTRIC PROJECT

DATE: 8/25/61  
REVIEWED BY: JAMES L. MCCOY, P.E., YPSILANTI, MICHIGAN  
DATE: 10/25/61  
PREPARED BY: COMMONWEALTH ASSOCIATES, INC., JACKSON, MICHIGAN

EXHIBIT G-3  
FERC NO. 5334-E



NOTES

1. ALL DIMENSIONS ARE SHOWN FACE OF CURB TO FACE OF CURB.
2. CONTRACTOR TO PROVIDE ALL TRAFFIC CONTROL REQUIRED TO COMPLETE THIS PROJECT.
3. CONTRACTOR IS RESPONSIBLE FOR ALL STAKING AND LAYOUT FOR THIS PROJECT. THIS INCLUDES ALL GRADES & ESTABLISHMENT OF BENCHMARK.
4. INSTALL HANDICAP SYMBOL IN EACH HANDICAP PARKING SPACE.
5. CHAINLINK FENCE FABRIC TO BE INSTALLED ON THE INSIDE OF FENCE.
6. CONTRACTOR TO PROVIDE ALL PAINT STRIPING. THIS IS TO INCLUDE ALL LINES, ARROWS AND HANDICAP SYMBOLS.
7. NO STREET OR PARKING LOT LIGHTING WILL BE INSTALLED AS PART OF THIS CONSTRUCTION.
8. CLEARING & GRUBBING INCLUDES REMOVAL OF ALL TREES, STUMPS, ROCKS, VEGETATION, ROOTS, AND ANY EXISTING FENCING WITHIN THE CLEARING LIMIT LINE AS REQUIRED FOR CONSTRUCTION OPERATIONS.
9. STRIPPING OF TOPSOIL INCLUDES STRIPPING OF 12" TOPSOIL UNDER ALL PAVED AREAS AND GRAVEL PARKING AREA FOR LATER DISTRIBUTION IN RESTORATION OPERATIONS. CONTRACTOR REQUIRED TO PLACE SILT FENCE AROUND PILE TO PREVENT EROSION ONTO ADJACENT AREAS.
10. UPON COMPLETION OF THE PROJECT WORK CONTRACTOR SHALL REMOVE ANY EXCESS TOPSOIL, FINE GRADE AND SEED AREA.

REVISIONS		COMMENTS
INITIALS	DATE	

CHARTER TOWNSHIP OF YPSILANTI  
RECREATION DEPT.  
7200 S. HURON RIVER DRIVE  
YPSILANTI, MI 48198  
PH: (734) 544-3807 FAX: (734) 544-3888

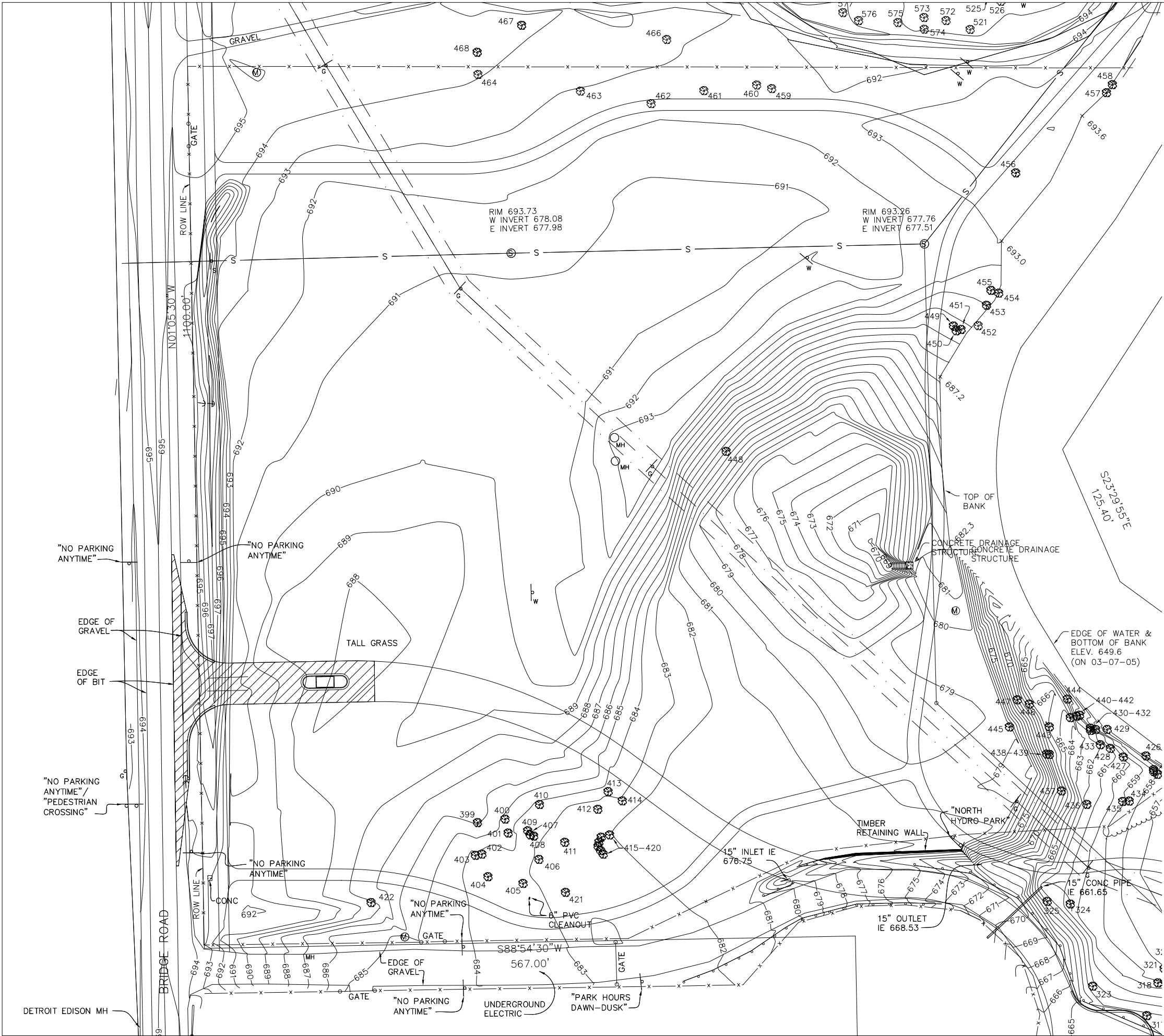
ENLARGEMENT PLAN A  
NORTH HYDRO PARK  
2599 BRIDGE ROAD  
YPSILANTI, MI 48198

DATE: PRELIMINARY	
DESIGNED BY: MSB	
CHECKED BY: MSB	
DRAWN BY: RJS	
PROJECT NO. 04009	
SCALE: 1"=40'	
SHEET: 1A	

  
NORTH

  
72 HOURS  
(3 WORKING DAYS)  
BEFORE YOU DIG  
CALL MISS DIG  
800-482-7171  
(TOLL-FREE)

(EXCLUDING SATURDAY, SUNDAY, AND HOLIDAYS)



NOTES

1. ALL DIMENSIONS ARE SHOWN FACE OF CURB TO FACE OF CURB.
2. CONTRACTOR TO PROVIDE ALL TRAFFIC CONTROL REQUIRED TO COMPLETE THIS PROJECT.
3. CONTRACTOR IS RESPONSIBLE FOR ALL STAKING AND LAYOUT FOR THIS PROJECT. THIS INCLUDES ALL GRADES & ESTABLISHMENT OF BENCHMARK.
4. INSTALL HANDICAP SYMBOL IN EACH HANDICAP PARKING SPACE.
5. CHAINLINK FENCE FABRIC TO BE INSTALLED ON THE INSIDE OF FENCE.
6. CONTRACTOR TO PROVIDE ALL PAINT STRIPING. THIS IS TO INCLUDE ALL LINES, ARROWS AND HANDICAP SYMBOLS.
7. NO STREET OR PARKING LOT LIGHTING WILL BE INSTALLED AS PART OF THIS CONSTRUCTION.
8. CLEARING & GRUBBING INCLUDES REMOVAL OF ALL TREES, STUMPS, ROCKS, VEGETATION, ROOTS, AND ANY EXISTING FENCING WITHIN THE CLEARING LIMIT LINE AS REQUIRED FOR CONSTRUCTION OPERATIONS.
9. STRIPPING OF TOPSOIL INCLUDES STRIPPING OF 12" TOPSOIL UNDER ALL PAVED AREAS AND GRAVEL PARKING AREA FOR LATER DISTRIBUTION IN RESTORATION OPERATIONS. CONTRACTOR REQUIRED TO PLACE SILT FENCE AROUND PILE TO PREVENT EROSION ONTO ADJACENT AREAS.
10. UPON COMPLETION OF THE PROJECT WORK CONTRACTOR SHALL REMOVE ANY EXCESS TOPSOIL, FINE GRADE AND SEED AREA.



72 HOURS  
(3 WORKING DAYS)  
BEFORE YOU DIG  
CALL MISS DIG  
800-482-7171  
(TOLL-FREE)

(EXCLUDING SATURDAY, SUNDAY, AND HOLIDAYS)

REVIEWS		COMMENTS
INITIALS	DATE	

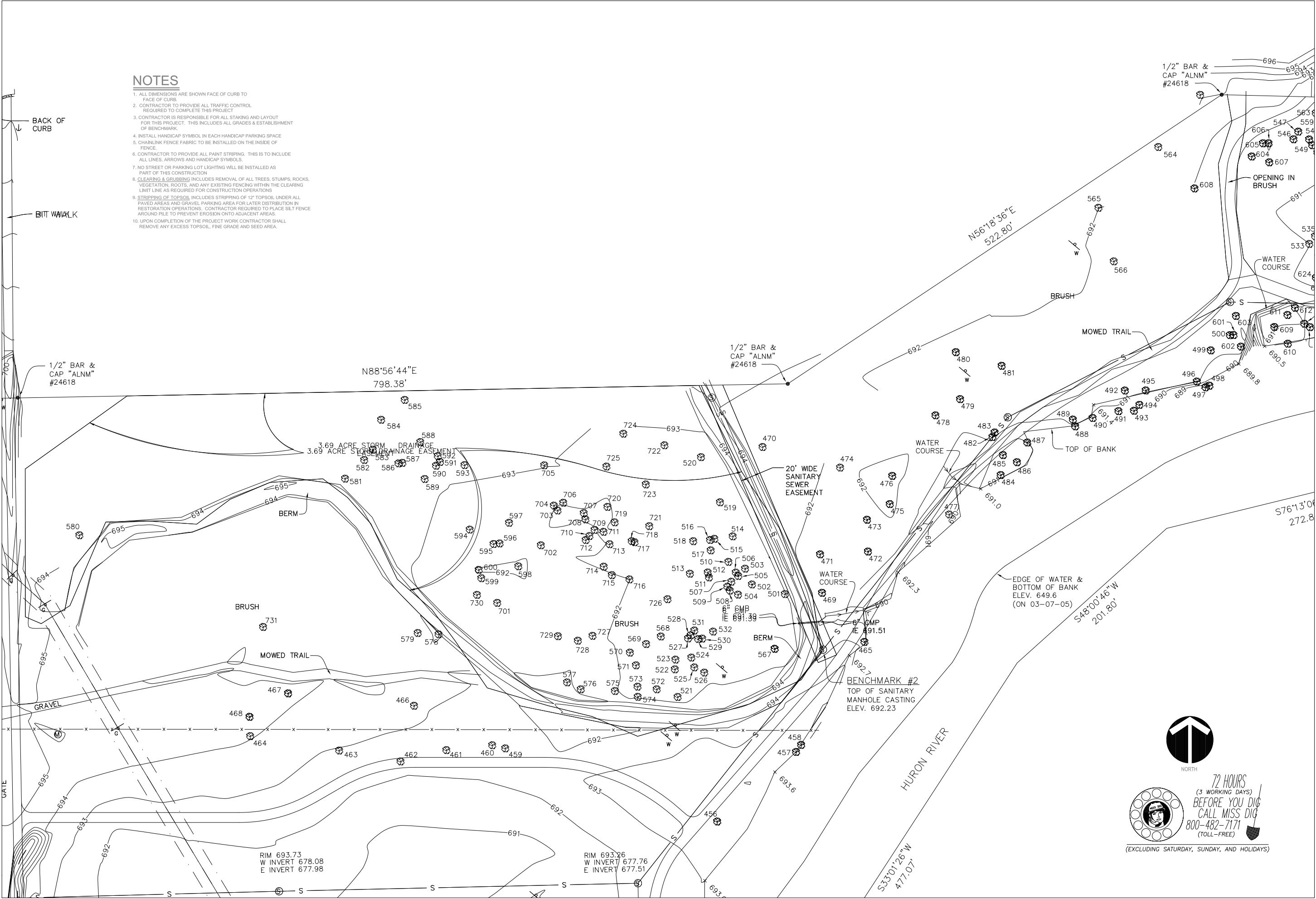
CHARTER TOWNSHIP OF YPSILANTI  
RECREATION DEPT.  
7200 S. HURON RIVER DRIVE  
YPSILANTI, MI 48198  
PH: (734) 544-3807 FAX: (734) 544-3888

ENALRGEMENT PLAN B  
NORTH HYDRO PARK  
2599 BRIDGE ROAD  
YPSILANTI, MI 48198

DATE: PRELIMINARY	
DESIGNED BY: MSB	
DRAWN BY: RJS	
PROJECT NO. 04009	
SCALE:	
DATE: 11-2-07	
BY: JWA	

NOTES

- 1. ALL DIMENSIONS ARE SHOWN FACE OF CURB TO FACE OF CURB.
- 2. CONTRACTOR TO PROVIDE ALL TRAFFIC CONTROL REQUIRED TO COMPLETE THIS PROJECT.
- 3. CONTRACTOR IS RESPONSIBLE FOR ALL STAKING AND LAYOUT FOR THIS PROJECT. THIS INCLUDES ALL GRADES & ESTABLISHMENT OF BENCHMARK.
- 4. INSTALL HANDICAP SYMBOL IN EACH HANDICAP PARKING SPACE.
- 5. CHAINLINK FENCE FABRIC TO BE INSTALLED ON THE INSIDE OF FENCE.
- 6. CONTRACTOR TO PROVIDE ALL PAINT STRIPING. THIS IS TO INCLUDE ALL LINES, ARROWS AND HANDICAP SYMBOLS.
- 7. NO STREET OR PARKING LOT LIGHTING WILL BE INSTALLED AS PART OF THIS CONSTRUCTION.
- 8. CLEARING & GRUBBING INCLUDES REMOVAL OF ALL TREES, STUMPS, ROCKS, VEGETATION, ROOTS, AND ANY EXISTING FENCING WITHIN THE CLEARING LIMIT LINE AS REQUIRED FOR CONSTRUCTION OPERATIONS.
- 9. STRIPPING OF TOPSOIL INCLUDES STRIPPING OF 12" TOPSOIL UNDER ALL PAVED AREAS AND GRAVEL PARKING AREA FOR LATER DISTRIBUTION IN RESTORATION OPERATIONS. CONTRACTOR REQUIRED TO PLACE SILT FENCE AROUND PILE TO PREVENT EROSION ONTO ADJACENT AREAS.
- 10. UPON COMPLETION OF THE PROJECT WORK CONTRACTOR SHALL REMOVE ANY EXCESS TOPSOIL, FINE GRADE AND SEED AREA.



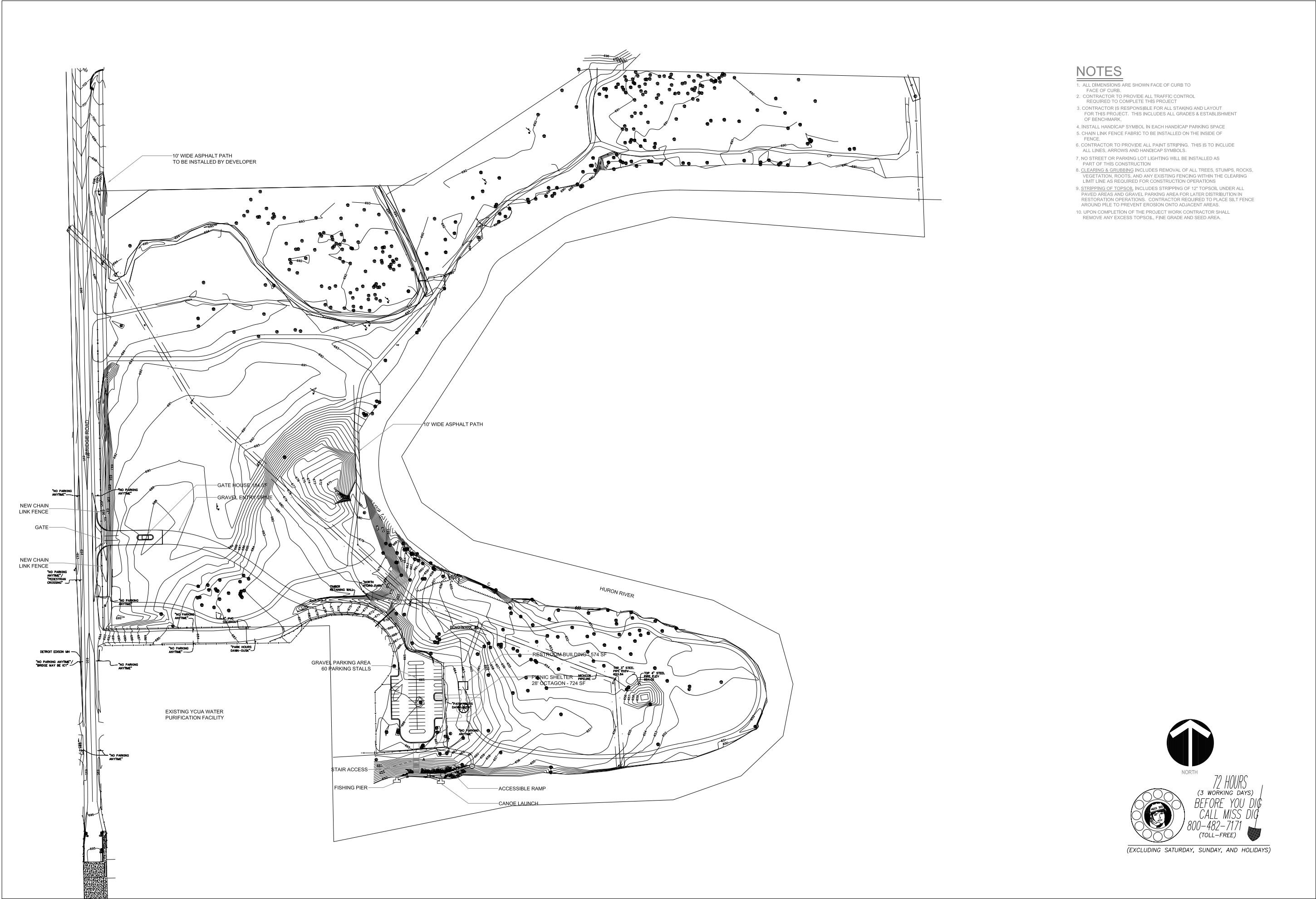
REVISIONS	DATE	COMMENTS
INITIALS		

CHARTER TOWNSHIP OF YPSILANTI  
RECREATION DEPT.  
7200 S. HURON RIVER DRIVE  
YPSILANTI, MI 48198  
PH: (734) 544-3807 FAX: (734) 544-3888

ENLARGEMENT PLAN C  
NORTH HYDROPARK  
2599 BRIDGE ROAD  
YPSILANTI, MI 48198

DATE: PRELIMINARY	DESIGNED BY: MSB
CHECKED BY: MSB	DRAWN BY: RJS
PROJECT NO. 04009	SCALE: 1"=40'
VERT. 1"=40'	ALL RIGHTS RESERVED





NOTES

1. ALL DIMENSIONS ARE SHOWN FACE OF CURB TO FACE OF CURB.
2. CONTRACTOR TO PROVIDE ALL TRAFFIC CONTROL REQUIRED TO COMPLETE THIS PROJECT.
3. CONTRACTOR IS RESPONSIBLE FOR ALL STAKING AND LAYOUT FOR THIS PROJECT. THIS INCLUDES ALL GRADES & ESTABLISHMENT OF BENCHMARK.
4. INSTALL HANDICAP SYMBOL IN EACH HANDICAP PARKING SPACE.
5. CHAIN LINK FENCE FABRIC TO BE INSTALLED ON THE INSIDE OF FENCE.
6. CONTRACTOR TO PROVIDE ALL PAINT STRIPING. THIS IS TO INCLUDE ALL LINES, ARROWS AND HANDICAP SYMBOLS.
7. NO STREET OR PARKING LOT LIGHTING WILL BE INSTALLED AS PART OF THIS CONSTRUCTION.
8. CLEARING & GRUBBING INCLUDES REMOVAL OF ALL TREES, STUMPS, ROCKS, VEGETATION, ROOTS, AND ANY EXISTING FENCING WITHIN THE CLEARING LIMIT LINE AS REQUIRED FOR CONSTRUCTION OPERATIONS.
9. STRIPPING OF TOPSOIL INCLUDES STRIPPING OF 12" TOPSOIL UNDER ALL PAVED AREAS AND GRAVEL PARKING AREA FOR LATER DISTRIBUTION IN RESTORATION OPERATIONS. CONTRACTOR REQUIRED TO PLACE SILT FENCE AROUND PILE TO PREVENT EROSION ONTO ADJACENT AREAS.
10. UPON COMPLETION OF THE PROJECT WORK CONTRACTOR SHALL REMOVE ANY EXCESS TOPSOIL, FINE GRADE AND SEED AREA.

REVISIONS		COMMENTS
INITIALS	DATE	

CHARTER TOWNSHIP OF YPSILANTI  
RECREATION DEPT.  
7200 S. HURON RIVER DRIVE  
YPSILANTI, MI 48198  
PH: (734) 544-3807 FAX: (734) 544-3888

OVERALL PLAN  
NORTH HYDRO PARK  
2599 BRIDGE ROAD  
YPSILANTI, MI 48198

DATE: PRELIMINARY
DESIGNED BY: MSB
CHECKED BY: MSB
DRAWN BY: RJS
PROJECT NO. 04009
SCALE: HORIZ. 1" = 100'
VERT. 1" = 10'



(EXCLUDING SATURDAY, SUNDAY, AND HOLIDAYS)