

**Park
Commission**

7200 S. Huron River Drive
Ypsilanti, MI 48197
Phone: 734-544-3800
Fax: 734-544-3888
www.ytown.org



David Streeter, Chair
Edward Burnett, Vice Chair
Sage Payzamor, Secretary
Elizabeth Corder, Treasurer

Commissioners:
Brad Cannon
Gloria Peterson
Debbie Swanson

Charter Township of Ypsilanti

**YPSILANTI TOWNSHIP PARK
COMMISSION**

REGULAR MEETING

Date: Monday, March 2, 2020

Time: 6:30 P.M.

LOCATION

Cafeteria-2nd Floor
Ypsilanti Township Civic Center
7200 S. Huron River Drive
Ypsilanti, Michigan 48197

AGENDA OF THE MARCH 2, 2020 REGULAR MEETING

I. Call to Order

II. Roll Call

III. Determination of Quorum

IV. Approval of Agenda

V. Approval of Minutes

VI. Citizens Participation

VII. Public Hearing

- A. 6:35 p.m.: Request for Spicer Group to apply on behalf of Ypsilanti Township for a Land and Water Conservation Fund MDNR grant to make improvements to Community Center Park.
- B. 6:45 p.m.: Request for Spicer Group to apply on behalf of Ypsilanti Township for a Recreation Passport MDNR grant to make improvements to Clubview Park.

VIII. Reports

A. Staff Reports

B. Commissioner Reports

IX. Unfinished Business

X. New Business

- A. Ford Lake Picnic/Structure Pad

XI. Announcements

XII. Recommendations to the Township Board

- A. Recommendation to adopt a resolution to authorize submittal of a Land and Water Conservation Fund grant through the MDNR for tennis court improvements at Community Center Park. The resolution also commits to the required local match. Total project cost is estimated at \$352,400. This grant has a 50% local match requirement so the grant will fund \$176,200 and will require \$176,200 of local funds.
- B. Recommendation to adopt a resolution to authorize submittal of a Recreation Passport grant through the MDNR for tennis court improvements at Clubview Park. The resolution also

Ypsilanti Township Park Commission
commits to the required local match. Total project cost is estimated at \$249,500. This grant has a
maximum request of \$150,000 so the required local match will be in the amount of \$99,500.

XIII. Adjournment

**CHARTER TOWNSHIP OF YPSILANTI
PARK COMMISSION
PROPOSED MINUTES OF THE FEBRUARY 3, 2020 REGULAR MEETING**

Park Commission Agendas and Minutes are available on the township website at <https://ytown.org/park-commission>

I. Call to Order

Commission Chair Streeter called the meeting to order at 6:33 p.m. in the Charter Township of Ypsilanti Civic Center’s Board Room

II. Roll Call

Commissioners Present: Edward Burnett, Elizabeth Corder, Gloria Peterson, David Streeter, and Debbie Swanson

Commissioners Not Present: Brad Cannon and Sage Pazyamor

Staff Present: Mike Hoffmeister and Angela Verges

Township Board Members Present: Monica Ross-Williams

III. Determination of Quorum

Quorum present

IV. Approval of Agenda

Motion to approve the agenda made by Peterson

Seconded by Burnett

Motion Carried Unanimously

V. Approval of Minutes – January 6, 2020

Motion to approve January 6, 2020 minutes made by Peterson

Seconded by Burnett

Motion Carried Unanimously

VI. Citizens Participation

Trustee Monica Ross-Williams spoke on the location for a possible dog park. She appreciates the due diligence that the park commission did on moving this project forward. She expressed thanks and appreciation for the park commission’s work.

Tajalli Hodge shared information about the event that was held in Sugarbrook Park. She said about 240 people attended the event. There was a bounce house and books were distributed to children. The event was organized through a partnership with the Neighborhood Relationships Committee and Habitat for Humanity.

VII. Reports

A. Commissioner Reports

None

B. Staff Reports

Mike Hoffmeister shared the following updates:

1. The Hewen’s Creek Signage Project is completed.
2. Burns Park tennis court bids are out.
3. Community Center flooring request for bids will be in the 2/18 trustee packets.
4. Staff will be exploring getting technology to process entrance fees to parks on credit/debit cards.

Angela Verges shared the following update:

1. The township is working with the YMCA to provide mobile recreation programs in neighborhood parks called Y on the Fly.
2. The township is also collaborating with the YMCA on day care programming.

VIII. Unfinished Business

A. Dog Park

Dog park subcommittee (park commission representatives Streeter and Swanson working with trustee representatives Jarrell Roe and Ross-Williams) has completed the work to make a recommendation for a dog park location. The sub committee recommends exploring a pilot dog park at the park land at the east end of Lakeside Park between the EMU boathouse and the party store.

Peterson had questions about fencing, a drinking water source, and activities for dogs.

If it is determined that this location would be a viable location for a pilot dog park, fencing will need to be installed.

Trustee Ross-Williams shared that Swift Run dog park in Ann Arbor does not have an onsite water source. People bring jugs of water with them when they visit the park with their dogs. She also shared that there is fencing around the park as well as internal fencing for a small dog area. There are poles installed for bags to clean up dog waste.

Motion to recommend the township board of trustees investigate the Lakeside Park location for a pilot dog park made by Streeter

Seconded by Peterson

Motion Carried Unanimously

B. Special Event Application & Policy

Hoffmeister gave an overview of the changes made at request of the park commission after reviewing and discussing the draft policy at the January 6, 2020 meeting.

Motion of support for the Special Event Application & Policy made by Swanson

Seconded by Burnett

Motion Carried Unanimously

C. LPI Publishing Service Agreement

Motion of support for the LPI Publishing Service Agreement made by Peterson

Seconded by Burnett

Motion Carried Unanimously

D. Grove Road Phase 2

Hoffmeister shared plans and maps showing the pathway revisions.

Motion of support for the Grove Street Pathway Revision made by Swanson

Seconded by Peterson

Motion Carried Unanimously

IX. New Business

None

X. Announcements

March 2nd meeting is scheduled in the Civic Center cafeteria area.

XI. Recommendations to the Township Board

Motion to recommend the township board of trustees investigate the Lakeside Park location for a pilot dog park made by Streeter
Seconded by Peterson Motion Carried Unanimously

Motion of support for the Special Event Application & Policy made by Swanson
Seconded by Burnett Motion Carried Unanimously

Motion of support for the LPI Publishing Service Agreement made by Peterson
Seconded by Burnett Motion Carried Unanimously

Motion of support for the Grove Street Pathway Revision made by Swanson
Seconded by Peterson Motion Carried Unanimously

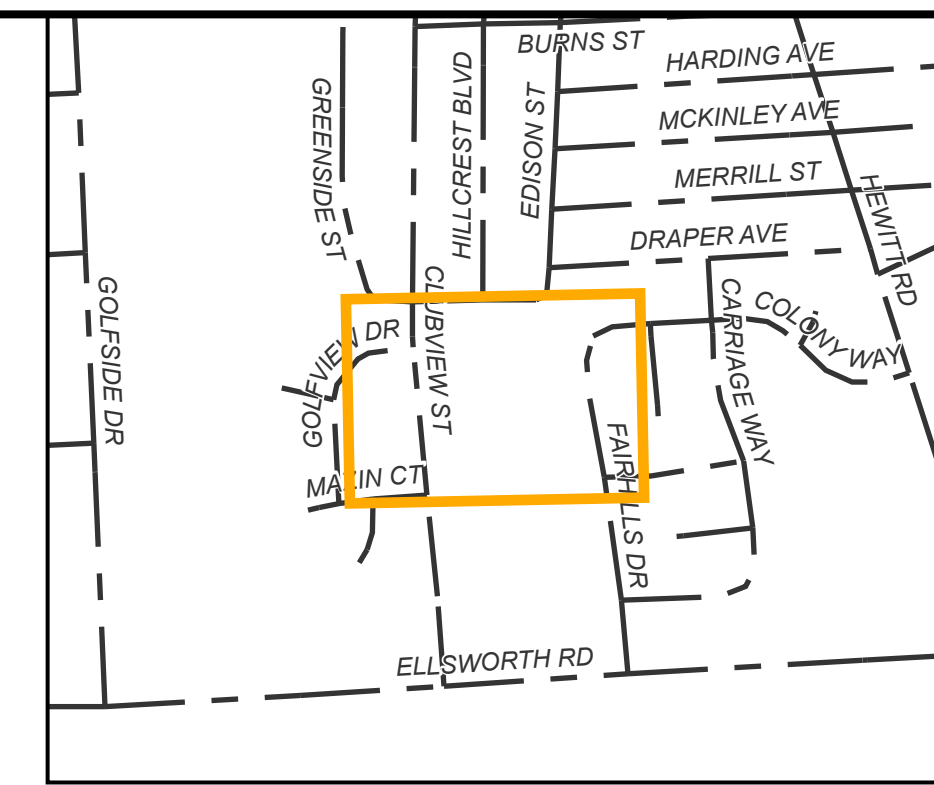
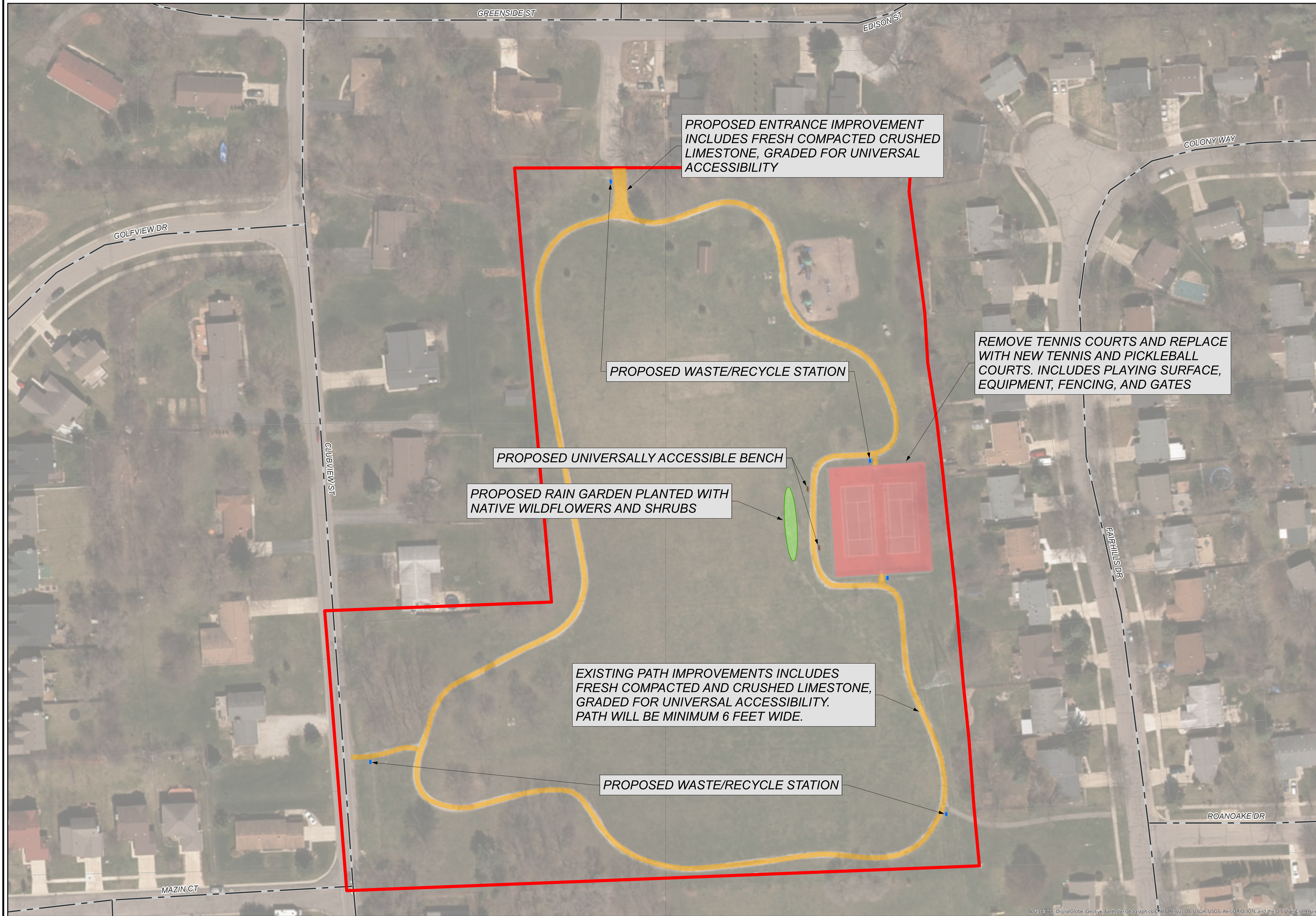
XII. Adjournment

Motion to adjourn made by Peterson
Seconded by Burnett Motion Carried Unanimously
Meeting Adjourned at 7:15p.m.

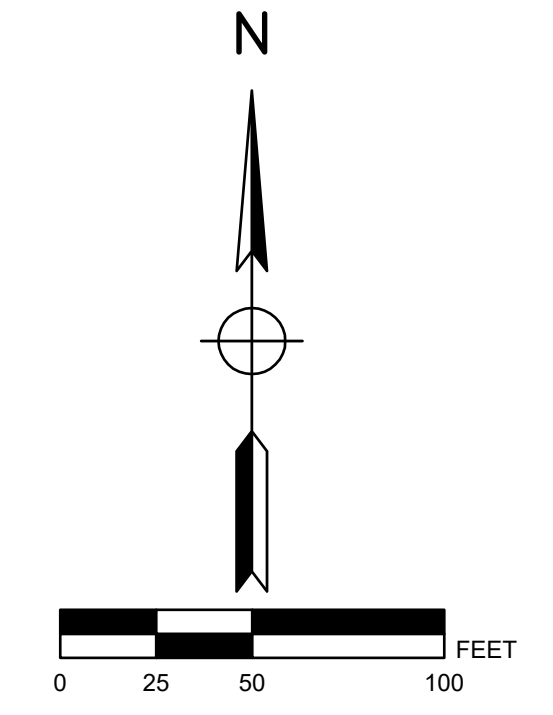
CLUBVIEW PARK

WASHTENAW COUNTY, MICHIGAN

YPSILANTI CHARTER TOWNSHIP



AREA MAP
NOT TO SCALE



LEGEND

- COUNTY ROADS
- Park Boundary

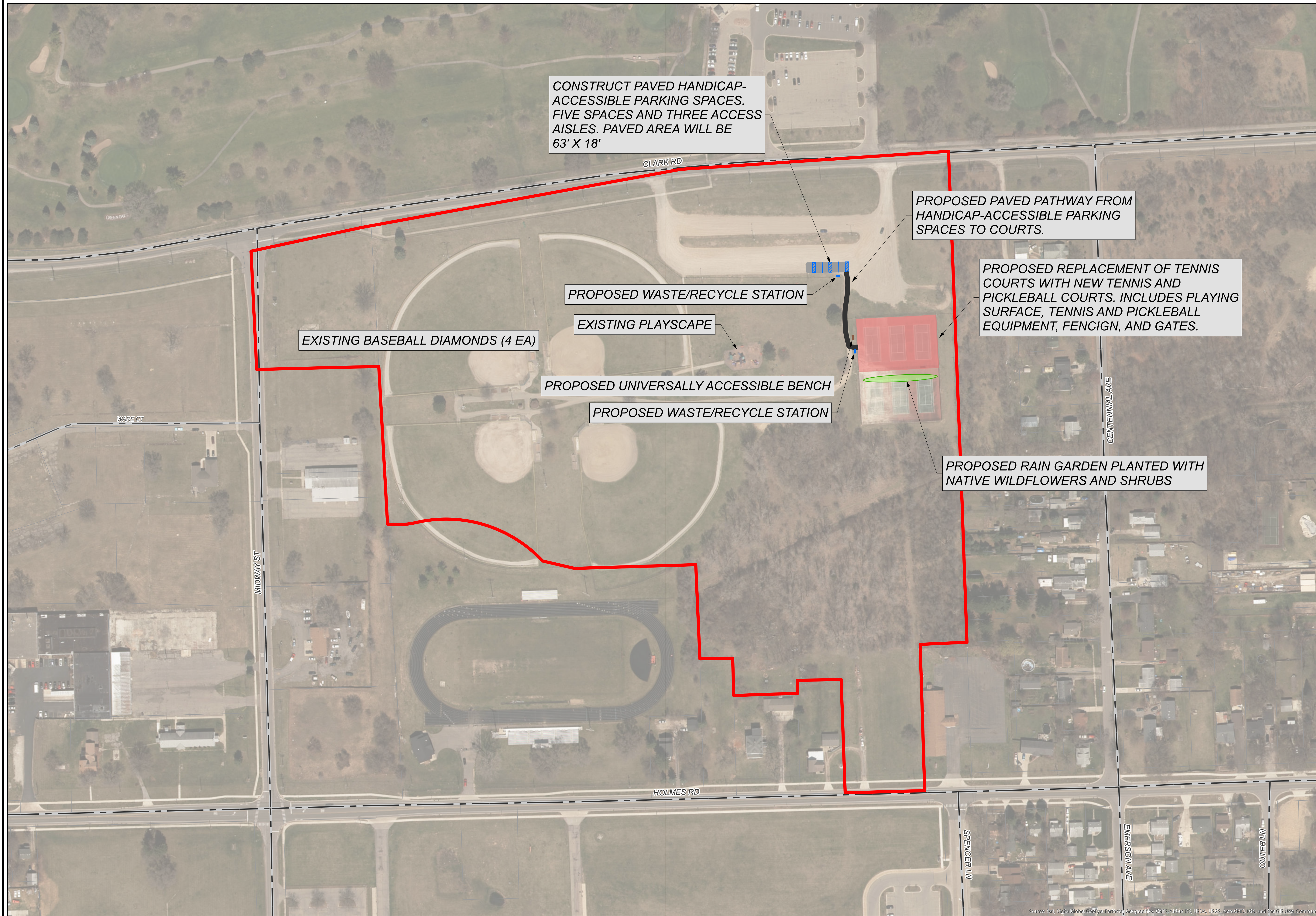
BY	MARK	REVISIONS	DATE
THE WORK REPRESENTED BY THIS DRAWING WAS DESIGNED BY THE ENGINEER FOR THIS SPECIFIC APPLICATION AND SPECIFIC LOCATION DESCRIBED HEREIN IN ACCORDANCE WITH THE CONDITIONS PREVALENT AT THE TIME THE DESIGN WAS DONE. THE ENGINEER DOES NOT GUARANTEE AND WILL NOT BE LIABLE FOR ANY OTHER LOCATION, CONDITION, DESIGN OR PURPOSE.			
CLUBVIEW PARK CHARTER TOWNSHIP OF YPSILANTI			
RP20-0025 CONCEPT PLAN			
		DUNDEE OFFICE 125 Holte Blvd, Suite 2 Dundee, MI 48131 Tel. 734-823-3306 www.SpicerGroup.com	
DE BY: K/JW DR BY: K/JW	CH BY: XXX APP BY: XXX	PROJECT NO. 127617SG2019	
STDS.		SHEET 1 OF 1	DR 1
DATE: FEBRUARY 2020 SCALE: 1"=50'		FILE NO.	

PATH: L:\PROJECTS\127617SG2019 - CLUBVIEW PARK GRANT DESIGN CONCEPT - CLUBVIEW PARK, PRINTED ON: 3/11/2020, BY: REVIEWS

Source: Esri, DigitalGlobe, GeoEye, Earthstar (Geographics), CNES/Airbus DS, USDA, USGS, AeroGRID, IGN, and the GIS User Community

COMMUNITY CENTER PARK CHARTER TOWNSHIP OF YPSILANTI

WASHTENAW COUNTY, MICHIGAN



CONSTRUCT PAVED HANDICAP-ACCESSIBLE PARKING SPACES. FIVE SPACES AND THREE ACCESS AISLES. PAVED AREA WILL BE 63' X 18'

PROPOSED PAVED PATHWAY FROM HANDICAP-ACCESSIBLE PARKING SPACES TO COURTS.

PROPOSED REPLACEMENT OF TENNIS COURTS WITH NEW TENNIS AND PICKLEBALL COURTS. INCLUDES PLAYING SURFACE, TENNIS AND PICKLEBALL EQUIPMENT, FENCIGN, AND GATES.

PROPOSED WASTE/RECYCLE STATION

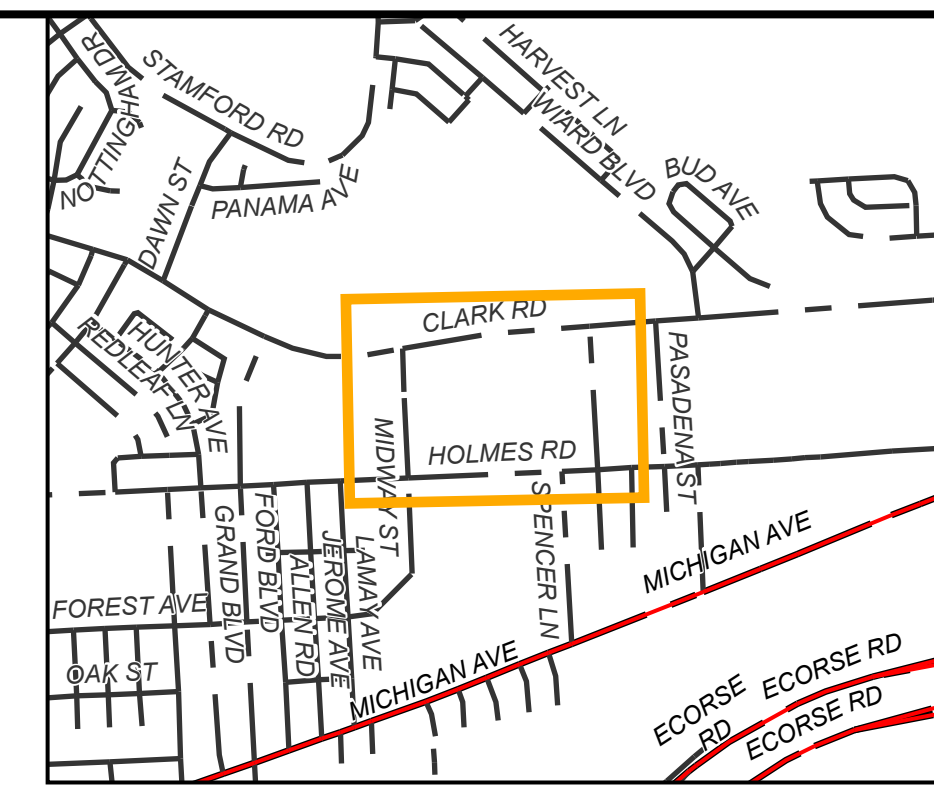
EXISTING PLAYSCAPE

EXISTING BASEBALL DIAMONDS (4 EA)

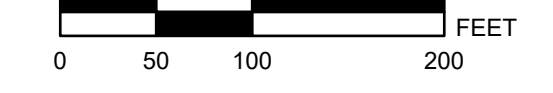
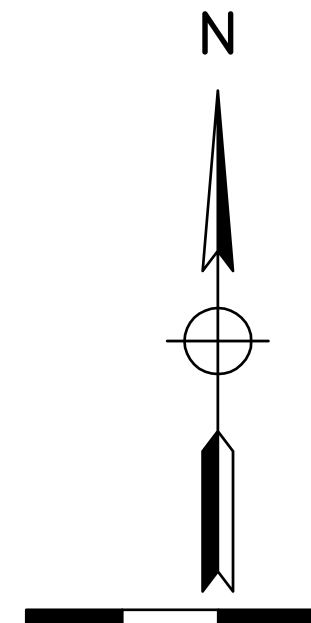
PROPOSED UNIVERSALLY ACCESSIBLE BENCH

PROPOSED WASTE/RECYCLE STATION

PROPOSED RAIN GARDEN PLANTED WITH NATIVE WILDFLOWERS AND SHRUBS



AREA MAP
NOT TO SCALE

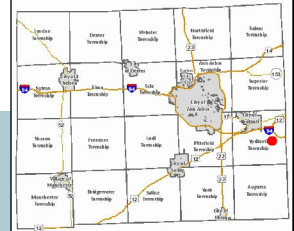


LEGEND










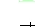


- COUNTY ROADS
- LOCAL ROADS
- Park Boundary

BY	MARK	REVISIONS	DATE
<p>THE WORK REPRESENTED BY THIS DRAWING WAS DESIGNED BY THE ENGINEER FOR THIS SPECIFIC APPLICATION AND SPECIFIC LOCATION DESCRIBED HEREIN IN ACCORDANCE WITH THE CONDITIONS PREVALENT AT THE TIME THE DESIGN WAS DONE. THE ENGINEER DOES NOT GUARANTEE AND WILL NOT BE LIABLE FOR ANY OTHER LOCATION, CONDITION, DESIGN OR PURPOSE.</p>			
<p>COMMUNITY CENTER PARK CHARTER TOWNSHIP OF YPSILANTI</p>			
<p>LW20-0015 CONCEPT PLAN</p>			
		<p>DUNDEE OFFICE 125 Holte Blvd, Suite 2 Dundee, MI 48131 Tel. 734-823-3308 www.SpicerGroup.com</p>	
DE BY: K/JW	CH BY: XXX	PROJECT NO.	
DR BY: K/JW	APP BY: XXX	127617SG2019	
STDS.	SHEET 1 OF 1	DR	
DATE: FEBRUARY 2020	FILE NO.	1	
SCALE: 1"=100'			

PATH: L:\PROJECTS\18127617SG2019 - COMMUNITY CENTER PARK GRANIT DESIGN CONCEPT - COMMUNITY CENTER PARK - PRINTED ON: 2/11/2020 BY: KJW/KW



Legend

-  TaxParcel
-  Lot and Units
-  Quarter Sections
-  Sections
-  University and College
-  K12 Schools
-  Police Stations
-  Fire Stations
-  County Buildings
-  Local Unit Offices
-  Railroad
-  O2015_boundary

THIS MAP REPRESENTS PARCELS AT THE TIME OF PRINTING. THE OFFICIAL PARCEL TAX MAPS ARE MAINTAINED SOLELY BY THE WASHTENAW COUNTY EQUALIZATION DEPARTMENT AND CAN BE OBTAINED BY CONTACTING THAT OFFICE AT 734-222-6662.

The information contained in this cadastral map is used to locate, identify and inventory parcels of land in Washtenaw County for appraisal and taxing purposes only and is not to be construed as a "survey description". The information is provided with the understanding that the conclusions drawn from such information are solely the responsibility of the user. Any assumption of legal status of this data is hereby disclaimed.

NOTE: Parcels may not be to scale.
2/21/2020



Notes

